

CVFL-GIGA 6xx & 7xx

CW Visible Fiber Laser with gigahertz linewidth



ELBA-M



MAIN FEATURES

- Output power up to 3 W
- 642, 660 and 780 standard wavelengths
- 20 GHz linewidth
- Linear polarization
- Short modulated pulse option
- Diffraction limited output ($M^2 < 1.1$)
- Robust and reliable

MAIN APPLICATIONS

- SUPER-RESOLUTION MICROSCOPY
- DNA SEQUENCING
- MEDICAL APPLICATIONS (OPHTHALMOLOGY AND DERMATOLOGY)
- LASER SHOWS
- PETAWATT LASER LINE ALIGNMENT
- LASER DOPPLER VELOCIMETRY

“

The Lumibird CVFL-GIGA are frequency converted Ytterbium and Erbium-Ytterbium doped fiber lasers at a fixed wavelength with models from 635 to 665 nm and 767 to 790 nm.

The design is composed by an all-fiber laser cavity emitting in the IR range and a frequency conversion module for visible light generation. The frequency conversion module is a single-pass periodically poled crystal integrated in a dust free mechanical package. This frequency conversion module is very compact and can be placed up to 3 meters away from the laser box. No active cooling is required for the module.

These fiber lasers represent a very reliable, robust and stable solution compared to other DPSS technologies. The CVFL-GIGA is a perfect solution for industrial and medical applications.

”

www.keopsys.com

Many options and configurations are available. Please contact Lumibird to find the best match for your needs and compatibility between options.

CVFL-GIGA 6xx & 7xx

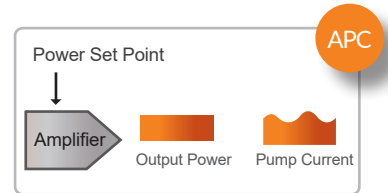
CW Visible Fiber Laser with gigahertz linewidth



SPECIFICATIONS

	CVFL-GIGA 6xx & 7xx
Mode of operation	CW
Output power (W)	up to 2
Operating wavelength (nm)	642 / 660 / 780
Wavelength stability over 1 hour, +/- 1 °C (pm)	< 10
Linewidth (GHz)	20
Polarization	Linear (PER > 20 dB)
Output power monitoring	Integrated
Output power stability over 1 hour (% rms)	< 2
Output termination	Free-space collimated beam
Beam quality, M ²	< 1.1

Mode of operation



APC (Automatic Power Control)

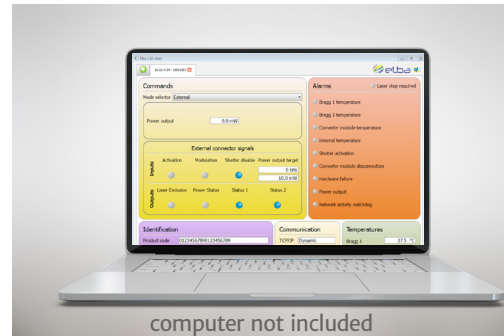


EASY TO INTEGRATE !



Control box

- Control box and cables delivered with the module for easy evaluation. Available as an option
- Heat dissipation kit also available as an option



computer not included

Remote control

- TTL control
- Ethernet port and command set provided for easy integration
- GUI provided

Reliability



All our fiber lasers and fiber amplifiers are manufactured according to our ISO certified quality management system, which places the needs and values of customers and partners at the heart of our organization. Throughout the manufacturing process, our components and systems are subjected to rigorous tests and inspections, which guarantees their robustness and reliability in the most demanding environments. Countless units operate continuously without maintenance around the world. The ISO 9001 certificates can be downloaded from our website.



LASER RADIATION
AVOID EYE OR SKIN EXPOSURE TO
DIRECT OR SCATTERED RADIATION
CLASS 4 LASER PRODUCT

www.keopsys.com

Many options and configurations are available. Please contact Lumibird to find the best match for your needs and compatibility between options.



Lumibird has locations across the globe that are available to provide support for any product, service or inquiry. Visit www.lumibird.com to connect with any of our global sites.

